

# Cal Poly Art and Design

## Xerox 7500: Wireless Printing in 21-206

Written By: Art Tech



## INTRODUCTION

This guide will show you how to install and configure the **Xerox 7500** driver on your Mac to print via the wireless network. Overview of steps in this guide:

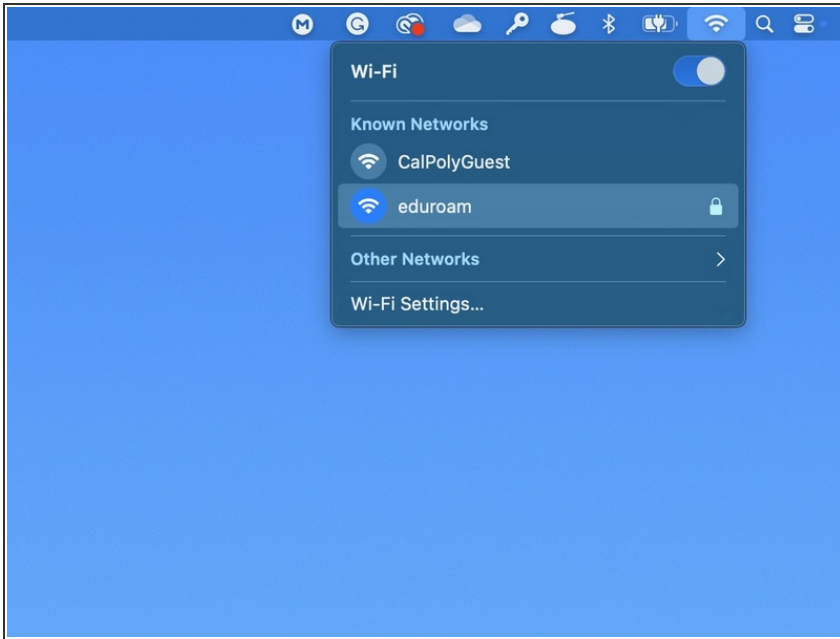
1. **Verify wireless connection**
2. **Download & Install printer driver**
3. **Set up printer**
4. **Verify set up and Print!**

This Xerox 7500 is a color laser printer, and is set up to print to 2 sizes of plain white paper:

- **Tray 2 - Tabloid (11 x 17)**
- **Tray 3 - Letter (8.5 x 11)**
- **Tray 1 - Manual Feed Tray (for specialty media)**

It can duplex (print both sides). Remember to deselect two-sided printing in the Xerox Features pull down print driver menu.

## Step 1 — Verify your Connection

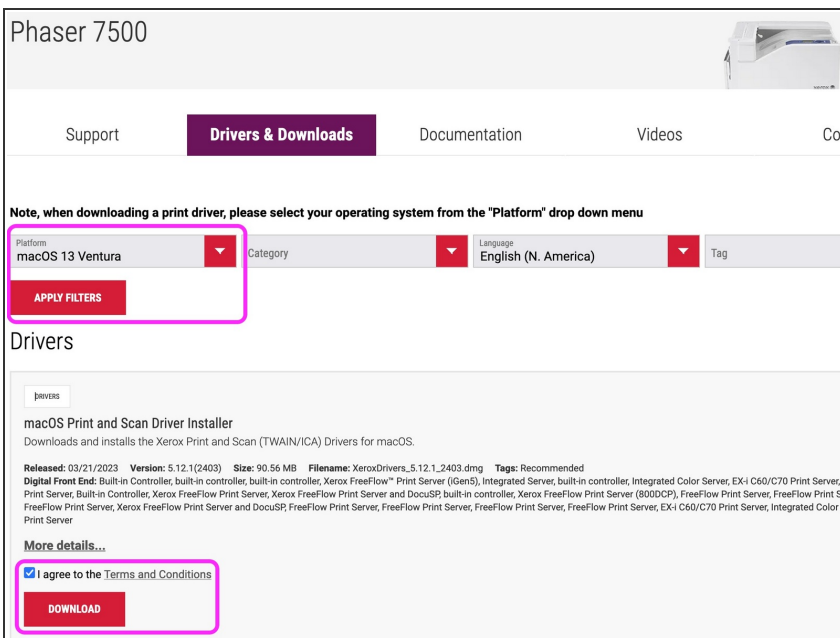


- Verify your Mac is on the **eduroam** network.

- ❗ If you are not already connected to **eduroam**, use the info [here](#) to connect. Select your OS and follow the steps.

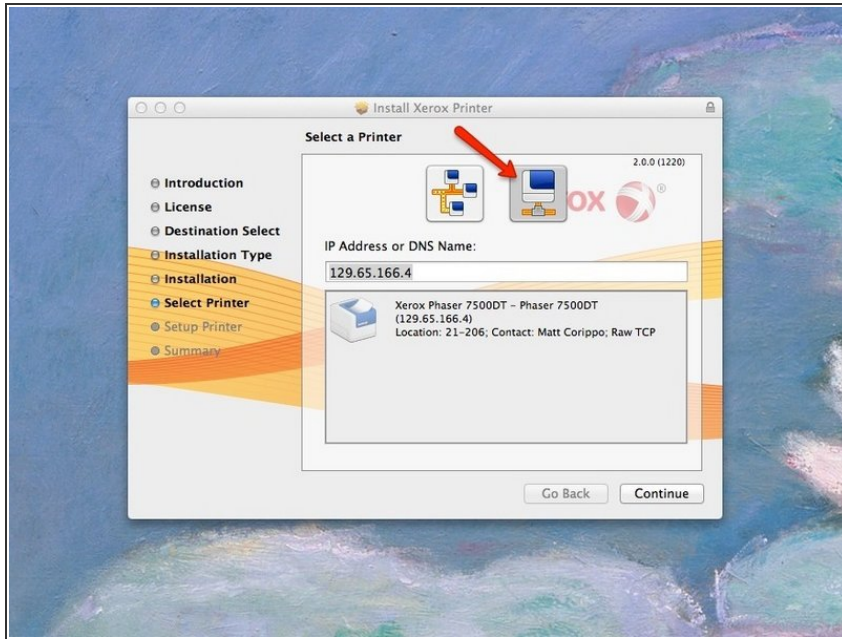
- ⚠ Still can't connect? Check out the troubleshooting steps [here](#).

## Step 2 — Download and install printer driver software



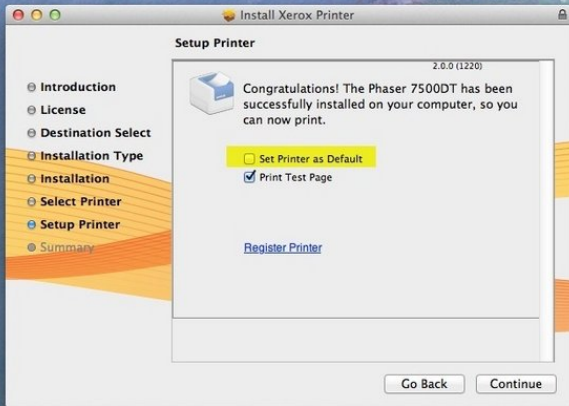
- [Download](#) the printer driver for Mac OS, by clicking on the **accept** button on the bottom of the page.
- Open and run the Xerox Driver Installer package.
- Continue through the installer steps until you see the **Select a Printer** window.

## Step 3 — Configure printer



- Once the installation is complete, the installer will display the **Select a Printer** window. **Disregard the default option**, and select the network configuration button on the *right*.
- Enter the IP address: **129.65.166.4**, and the printer will be recognized on the network and displayed.
- Click the **Continue** button to proceed.

## Step 4 — Complete printer setup



- In the Setup Printer window, consider unchecking option **Set Printer as Default**, unless this will be your primary printer.
- With the **Print Test Page** option selected, click the **Continue** button to complete the setup, and to automatically print a test page to confirm success.
- ✦ The Xerox 7500 is located in the storage area at the back of the room. Retrieve your print to verify printer set up is complete.
- ⓘ You can change the Default Printer setting in **System Preferences / Printers** at any time.